

2025/2026

TERMOFORMING MACHINES



HOME OF
PACKAGING

TBS PACK

 **alpha-pack**
group

 **alpha-automatic**



TERMOFORMING MACHINES

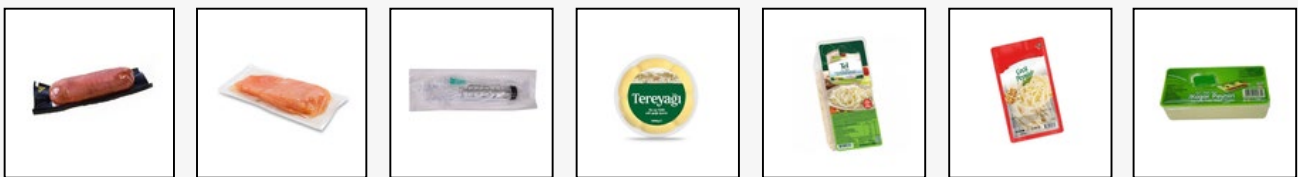
DEW-300

DEW-200

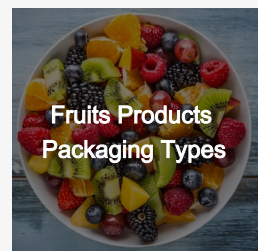
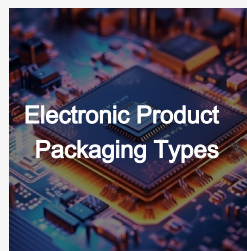
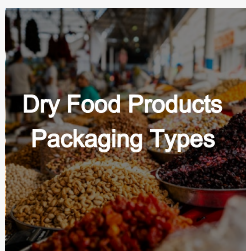
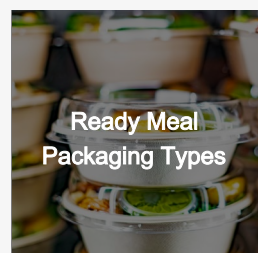
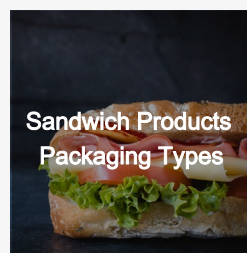
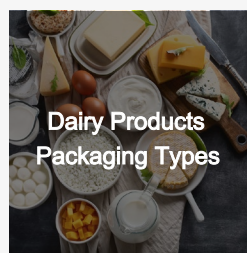
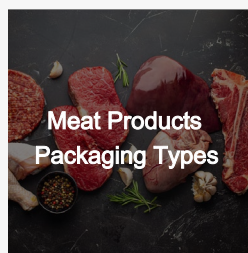
DEW-100

What can be packaged with Thermoforming Machines?

The W Series Fully Automatic Vacuum and MAP Applied Thermoforming Packaging Machine is a versatile solution that can meet various needs, performing all packaging processes and providing products with an extended shelf life. It can be used in many different areas such as packaging dairy products, baked goods, meat products, medical products, ready-to-eat meals, and dried fruit and vegetable products. Additional Features that can be integrated: Travers unit, inkjet, labeling systems, control systems, scale.



Packable Products





TECHNICAL SPECS

CYCLE	8-12 CYCLE / MINUTES
PITCH	MAX 450 MM
FILM WIDTH	360, 420, 460, 520, 600 MM
SUITABLE FILM MATERIALS	PA+PE / PET+PE / PVC+PE / XPP
CONTROL PANEL	7" INC. TOUCH COLOR SCREEN
AUTOMATIC CONVEYOR	SPEED ADJUSTABLE WITH SERVO MOTOR
BOTTOM FILM	SOFT FILM AND HARD FILM
TOP FILM	SOFT FILM, PAPER
PRINTING	UNPRINTED, PHOTOCCELL OR CONTINUOUS PRINTED
EXTERNAL BODY	STAINLESS STEEL AISI304
WARRANTY	2 YEARS
CERTIFICATE	CE



TECHNICAL SPECS

CYCLE	8-12 CYCLE / MINUTES
PITCH	MAX 300 MM
FILM WIDTH	300, 320, 360, 420 MM
SUITABLE FILM MATERIALS	PA+PE / PET+PE / PVC+PE / XPP
CONTROL PANEL	7" INC. TOUCH COLOR SCREEN
AUTOMATIC CONVEYOR	SPEED ADJUSTABLE WITH SERVO MOTOR
BOTTOM FILM	SOFT FILM AND HARD FILM
TOP FILM	SOFT FILM, PAPER
PRINTING	UNPRINTED, PHOTOCCELL OR CONTINUOUS PRINTED
EXTERNAL BODY	STAINLESS STEEL AISI304
WARRANTY	2 YEARS
CERTIFICATE	CE



TECHNICAL SPECS

CYCLE	7-8 CYCLE / MINUTES
PITCH	MAX 210 MM
FILM WIDTH	200, 285, 300, 320, 360 MM
SUITABLE FILM MATERIALS	PA+PE / PET+PE / PVC+PE / XPP
CONTROL PANEL	7" INC. TOUCH COLOR SCREEN
AUTOMATIC CONVEYOR	SPEED ADJUSTABLE WITH SERVO MOTOR
BOTTOM FILM	SOFT FILM AND HARD FILM
TOP FILM	SOFT FILM, PAPER
PRINTING	UNPRINTED, PHOTOCCELL OR CONTINUOUS PRINTED
EXTERNAL BODY	STAINLESS STEEL AISI304
WARRANTY	2 YEARS
CERTIFICATE	CE

Technical Specifications



DEW-300

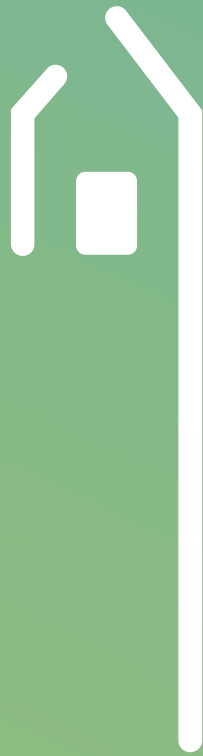
DEW-200

DEW-100

MACHINE LENGTH	FROM 7 TO 10 METERS	FROM 4 TO 6 METERS	FROM 2.5 TO 3.5 METERS
CAPACITY	MAX. 8-12 (CYCLE/MIN)	MAX. 8-12 (CYCLE/MIN)	MAX. 7-8 (CYCLE/MIN)
MAXIMUM CUT-OFF LENGTH	700 MM	300 MM	250 MM
AUTOMATIC CONVEYOR	SERVO MOTOR	SERVO MOTOR	SERVO MOTOR
BOTTOM FILM MATERIAL	PA/PE, PET/PE/, PVC/PE	PA/PE, PET/PE/, PVC/PE	PA/PE, PET/PE/, PVC/PE
PACKAGING APPLICATIONS	SEALING, VACUUM, MAP, VAPOR SHRINK	SEALING, VACUUM, MAP, VAPOR SHRINK	SEALING, VACUUM, MAP, VAPOR SHRINK
MAXIMUM FORMING DEPTH			
SOFT FILM	MAX. 80 MM	MAX. 120 MM	MAX. 120 MM
RIGID FILM	MAX. 80 MM	MAX. 100 MM	MAX. 100 MM
TOP FILM MATERIAL	PA-PE	PA-PE	PA-PE

What additional solutions can you add to your Thermoforming Machines?

- Check Weighter
- Metal Detector
- Label Applicator
- Inkjet
- Traverse Unit



HOME OF
PACKAGING

TBS PACK

 alpha-pack
group

 alpha-automatic

A SAFE HOME FOR EVERY PRODUCT

alpha-pack GmbH | Otto-Hahn-Allee 1 | 50374 Erftstadt
+49 - 2235-79479-0 | info@alphapack.de | www.alphapack.de

